

General Trash Units: lbs. (U.S. pounds)			
Month	2010	2011	2012
January	21.7	11.0	
February	20.0	13.8	
March	22.4	10.6	
April	21.5	8.8	
May	22.8	8.0	
June	13.8	10.4	
July	9.6	7.7	
August	12.0	12.8	
September	11.8	21.5	
October	8.6	0.0	
November	13.6	0.0	
December	11.2	0.0	
TOTAL:	189.0	104.6	0.0

Paper Recycling Units: lbs. (U.S. pounds)			
Month	2010	2011	2012
January	80.7	21.2	
February	76.8	2.0	
March	77.6	2.2	
April	83.7	28.5	
May	79.8	39.0	
June	73.2	40.3	
July	46.1	20.8	
August	24.3	32.8	
September	42.5	59.1	
October	46.5	0.0	
November	24.1	0.0	
December	24.7	0.0	
TOTAL:	680.0	245.9	0.0

General Recycling Units: lbs. (U.S. pounds)			
Month	2010	2011	2012
January	1.1	0.6	
February	1.2	0.8	
March	1.0	1.0	
April	1.7	0.9	
May	5.0	1.1	
June	0.0	1.0	
July	3.4	1.2	
August	0.8	2.8	
September	0.0	11.2	
October	1.0	0.0	
November	0.3	0.0	
December	0.5	0.0	
TOTAL:	16.0	20.6	0.0

2010 FIGURES	
TOTAL WASTE:	1158.4 lbs.
TOTAL RECYCLED:	928.0 lbs.
RECYCLING RATE:	80.11%
DIVERTED FROM LANDFILL:	969.4 lbs.
LANDFILL WASTE:	189.0 lbs.
TOTAL LANDFILL WASTE:	0.00%

Electronic Recycling Units: lbs. (U.S. pounds)			
Month	2010	2011	2012
January	44.0	0.0	
February	50.0	0.0	
March	49.0	0.0	
April	43.0	0.0	
May	46.0	0.0	
June	0.0	0.0	
July	0.0	0.0	
August	0.0	22.0	
September	0.0	0.0	
October	0.0	0.0	
November	0.0	0.0	
December	0.0	0.0	
TOTAL:	232.0	22.0	0.0

Diverted Waste Units: lbs. (U.S. pounds)			
Month	2010	2011	2012
January	0.0	0.0	
February	14.0	0.0	
March	0.0	0.0	
April	14.0	0.0	
May	8.6	0.0	
June	4.8	0.0	
July	0.0	0.0	
August	0.0	78.0	
September	0.0	0.0	
October	0.0	0.0	
November	0.0	0.0	
December	0.0	0.0	
TOTAL:	41.4	78.0	0.0

Total Waste Units: lbs. (U.S. pounds)			
Month	2010	2011 YTD	2012
January	147.5	32.8	
February	162.0	16.6	
March	150.0	13.8	
April	163.9	38.2	
May	162.2	48.1	
June	91.8	51.7	
July	59.1	29.7	
August	37.1	148.4	
September	54.3		
October	56.1		
November	38.0		
December	36.4		
TOTAL:	1158.4	379.3	0.0

2011 FIGURES	
TOTAL WASTE:	471.1 lbs.
TOTAL RECYCLED:	288.5 lbs.
RECYCLING RATE:	61.24%
DIVERTED FROM LANDFILL:	366.5 lbs.
LANDFILL WASTE:	104.6 lbs.
TOTAL LANDFILL WASTE:	22.20%

TOTAL WASTE:
All office waste

TOTAL RECYCLED:
All waste brought to recycling centers

RECYCLING RATE:
% of total waste brought to recycling centers

DIVERTED FROM LANDFILL:
All waste recycled, donated, or diverted

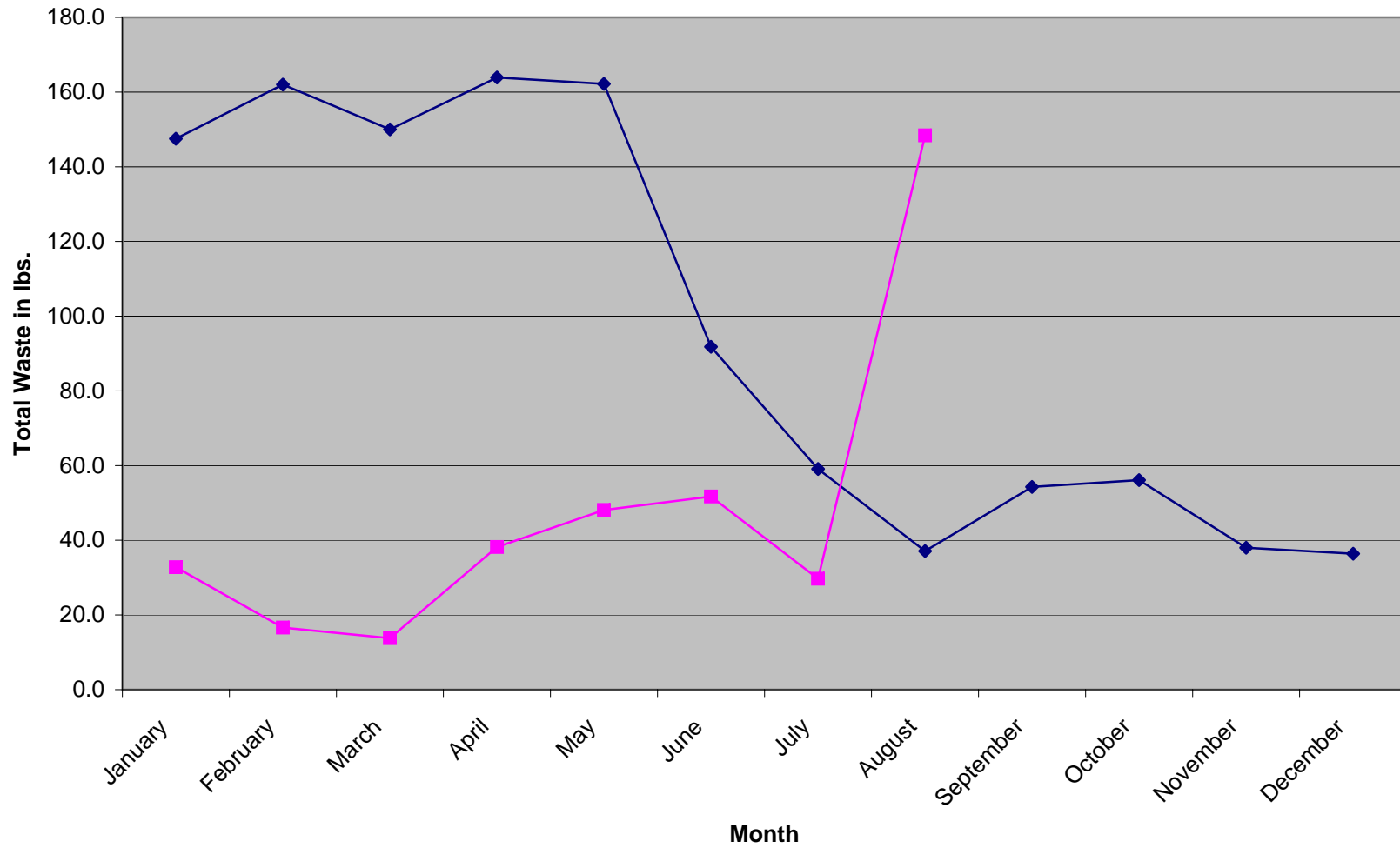
LANDFILL WASTE:
All general trash sent to landfill

TOTAL LANDFILL WASTE:
% of total waste sent to landfill

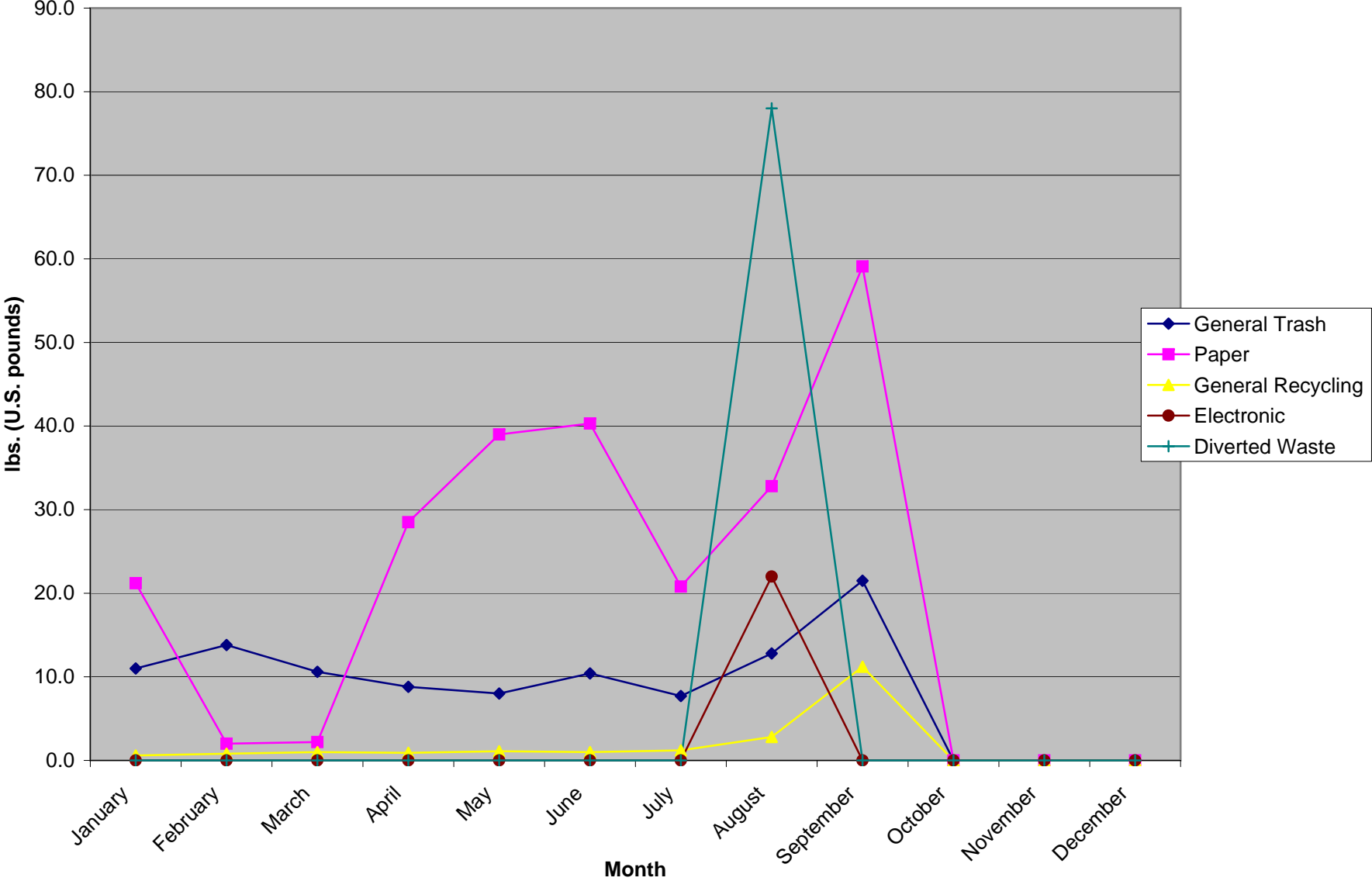
2012 FIGURES	
TOTAL WASTE:	0.0 lbs.
TOTAL RECYCLED:	0.0 lbs.
RECYCLING RATE:	#DIV/0!
DIVERTED FROM LANDFILL:	0.0 lbs.
LANDFILL WASTE:	0.0 lbs.
TOTAL LANDFILL WASTE:	#DIV/0!

Yearly Comparisons Graph

—◆— 2010 —■— 2011



Materials Comparison 2011 YTD



Quarterly Materials Comparison 2011 YTD

